

Gingerbread Icing Hat 1 of 2

Needles: US 6 (4 mm) circular and/or double pointed needles

Yarn: Approximately 170 yds (155 m) worsted weight

Gauge: 5 stitches + 6 rows = 1 inch in stockinette stitch.

Abbreviations:

st: stitch

cn: cable needle

dpn: double pointed needles

k: knit stitch

p: purl stitch

2/2 LC: place 2 st on cn and hold in front, k2, place 2 st from cn onto left hand needle and k2.

k2tog: slide right hand needle through two stitches and knit both at the same time.

ssk: slide two sts to the right hand needle as if to knit. Insert the left hand needle into the fronts of the sts and k them together.

p2tog: slide right hand needle through two stitches and purl both at the same time.

p3tog: slide right hand needle through three stitches and purl them all at the same time.

Start

Standard Brim (Option A):

Cast on 121 stitches.

ROW 1: Move last st next to the first st and k2tog to join row, [p1, k1] to last st, p1. (120 st total)

ROWS 2-6: [k1, p1] to end.

Skip to Row 14.

Start

Double Brim (Option B):

Cast on 121 stitches.

ROW 1: Move last st next to the first st and k2tog to join row, [p1, k1] to last st, p1. (120 st total)

ROWS 2-12: [k1, p1] to end.

Weave in loose end at cast-on edge. You can leave the loose end out a bit on back side, it will be enclosed in finished brim. The brim will be finished in the next row by knitting together the edge stitches with the row stitches.

ROW 13: For each k st pick up the cast-on edge stitch in line with live stitch and place it next to the k st on the LH needle; k2tog.

For each p st pick up the cast-on edge stitch in line with live stitch and place it next to the p st on the LH needle; p2tog. You will be knitting together the Row 13 st and the cast-on row st for each stitch in this row.

PATTERN REPEAT ROWS

(See chart below)

ROW 14: [k4, p1, k1, p2, k1, p1] to end.

ROW 15: [k4, p1] to end.

ROW 16: [k4, p1, k1, p2, k1, p1] to end.

ROW 17: [k4, p1] to end.

ROW 18: [k4, p1, k1, p2, k1, p1] to end.

ROW 19: [2/2 LC, p1, k4, p1] to end.

ROWS 20-25: repeat rows 14-19.

ROWS 26-31: repeat rows 14-19.

ROWS 32-37: repeat rows 14-19.

ROWS 38-43: repeat rows 14-19.



Standard Brim (A)



Doubled Brim (B)

PATTERN REPEAT ROWS (14-19)

Repeat chart 6 times for a full round.

19																				
18																				
17																				
16																				
15																				
14																				
	20	19	18	17	16	15	14	13	12	11	10	9	8	7	6	5	4	3	2	1

□ knit ■ purl ⊠ 2/2 LC



Gingerbread Icing Hat 2 of 2

Crown Decrease

See chart below. Change to *dpn* when work gets too small.

ROW 44: [k4, p1, k1, p2, k1, p1, k4, p1, k1, p2tog, k1, p1] 6 times. (114 st total)

ROW 45: [k4, p1, k4, p1, k4, p1, k3, p1] 6 times. (114 st total)

ROW 46: [k4, p1, k1, p2, k1, p1, k4, p1, ssk, k1, p1] 6 times. (108 st total)

ROW 47: [k4, p1, k4, p1, k4, p1, k2, p1] 6 times. (108 st total)

ROW 48: [k4, p1, k1, p2, k1, p1, k4, p1, ssk, p1,] 6 times. (102 st total)

ROW 49: [2/2 LC, p1, k4, p1, 2/2 LC, p1, k1, p1] 6 times. (102 st total)

ROW 50: [k4, p1, k1, p2, k1, p1, k4, p3tog] 6 times. (90 st total)

ROW 51: [k4, p1] to end. (90 st total)

ROW 52: [k4, p1, k1, p2tog, k1, p1, k4, p1] 6 times. (84 st total)

ROW 53: [k4, p1, k3, p1, k4, p1] 6 times. (84 st total)

ROW 54: [k4, p1, ssk, k1, p1, k4, p1] 6 times. (78 st total)

ROW 55: [2/2 LC, p1, k2, p1, 2/2 LC, p1] 6 times. (78 st total)

ROW 56: [k4, p1, ssk, p1, k4, p1] 6 times. (72 st total)

ROW 57: [k4, p1, k1, p1, k4, p1] 6 times. (72 st total)

ROW 58: [k4, p3tog, k4, p1] 6 times. (60 st total)

ROW 59: [k4, p1] to end. (60 st total)

ROW 60: [k3, k2tog] to end. (48 st total)

ROW 61: [2/2 LC] to end. (48 st total)

ROW 62: [k6, k2tog] to end. (42 st total)

ROW 63: [k5, k2tog] to end. (36 st total)

ROW 64: [k4, k2tog] to end. (30 st total)

ROW 65: [k3, k2tog] to end. (24 st total)

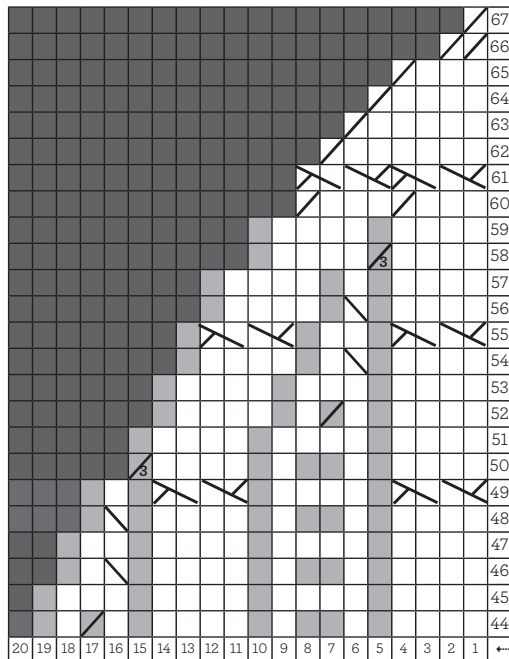
ROW 66: [k2tog] to end. (12 st total)

ROW 67: [k2tog] to end. (6 st total)

Bind off and weave in end.

CROWN DECREASE ROWS (44-67)

Repeat chart 6 times for a full round.



knit
 purl
 ssk
 k2tog
 2/2 LC
 p2tog
 p3tog
 no st

Flat Measurements

Measurements apply to both versions.



All measurements are approximate and will vary by yarn brand.