

Example knit with Lion Brand Wool-Ease in Gold.



# Trellis Fingerless Gloves 1 of 2

**Needles:** US4 (3.5 mm) dpns and US8 (5 mm) dpns  
**Yarn:** Approximately 120 yds (110 m) worsted weight  
**Gauge:** Using US4: 5.5 stitches + 7 rows = 1 inch in stockinette stitch. Using US8: 4.5 stitches + 5 rows = 1 inch in stockinette stitch.

## Abbreviations:

**st:** stitch  
**cn:** cable needle  
**dpn:** double pointed needles  
**k:** knit stitch  
**p:** purl stitch  
**k2tog:** slide right hand needle through two stitches and knit both at the same time.  
**k tbl:** knit into the back loop of the stitch to create a twisted knit st.  
**M1 p-st:** purl into the back and front of the stitch to add a new purl stitch.  
**2-st LPC:** slide 1 k st onto cn and hold to front, p1, k1 tbl from cn.  
**2-st RPC:** slide 1 p st onto cn and hold to back, k1 tbl, p1 from cn.  
**2-st LC:** slide 1 k st onto cn and hold to front, k1 tbl, k1 tbl from cn.  
**2-st RC:** slide 1 k st onto cn and hold to back, k1 tbl, k1 tbl from cn.

Detail of Picot Edge



## Start

**With size 4 needles,** Cast on 45 st over 3 needles: 14 st on first, 16 st on second, 15 st on third.

**ROW 1:** Move last st from the third needle next to the first st on the first needle and k2tog to join row, [p1, k1 tbl] to last st, p1. (44 st total)

**ROWS 2-27:** [k1 tbl, p1] to end. (44 st total)

## Start Thumb Gusset:

Rows will increase 1 stitch for the first two rows and then 2 stitches every other row.

**ROW 28:** k1 tbl, M1 p-st, [k1 tbl, p1] to end. (45 st total)

**ROW 29:** k1 tbl, p1, M1 p-st, [k1 tbl, p1] to end. (46 st total)

**ROW 30:** [k1 tbl, p1] to end. (46 st total)

**ROW 31:** k1 tbl, M1 p-st, k1 tbl, M1 p-st, [k1 tbl, p1] to end. (48 st total)

**ROW 32:** k1 tbl, p2, k1 tbl, p2, [k1 tbl, p1] to end. (48 st total)

**ROW 33:** k1 tbl, M1 p-st, p1, k1 tbl, p1, M1 p-st, [k1 tbl, p1] to end. (50 st total)

**ROW 34:** [k1 tbl, p1] to end. (50 st total)

**ROW 35:** k1 tbl, M1 p-st, [k1 tbl, p1] twice, k1 tbl, M1 p-st, [k1 tbl, p1] to end. (52 st total)

**ROW 36:** k1 tbl, p2, [k1 tbl, p1] twice, k1 tbl, p2, [k1 tbl, p1] to end. (52 st total)

**ROW 37:** k1 tbl, M1 p-st, [p1, k1 tbl] 3 times, p1, M1 p-st, (k1 tbl, p1) to end. (54 st total)

End of gusset increase.

## Flat Measurements

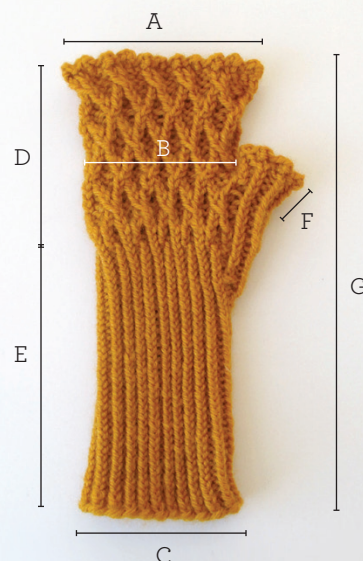
A. Top Edge Width  
4 in (10.2 cm)

B. Trellis Pattern Width  
3 in (7.6 cm)

C. Bottom Edge Width  
2.5 in (6.4 cm)

D. Trellis Section Length  
3.75 in (9.5 cm)

E. Ribbed Section Length  
4.75 in (12.1 cm)



F. Thumb Section  
1 in (2.5 cm)

G. Total Length  
8.5 in (21.6 cm)

All measurements are approximate and will vary by yarn brand.

# Trellis Fingerless Gloves 2 of 2

## Switch to size 8 needles.

This section is worked over 54 st.

**ROWS 38-39:** [k1 tbl, p1] 5 times, k1 tbl, [p2, k2 tbl] 10 times, p2, k1 tbl.

**ROW 40:** [k1 tbl, p1] 5 times, [2-st LPC, 2-st RPC] to end.

**ROW 41:** [k1 tbl, p1] 5 times, p1, [k2 tbl, p2] 10 times, k2 tbl, p1.

**ROW 42:** [k1 tbl, p1] 5 times, p1, [2-st LC, p2] 10 times, 2-st LC, p1.

**ROW 43:** [k1 tbl, p1] 5 times, p1, [k2 tbl, p2] 10 times, k2 tbl, p1.

## End Thumb Gusset:

**ROW 44:** put the first 10 st on a piece of waste yarn or stitch holder to knit later, continue knitting: [2-st RPC, 2-st LPC] to end. (44 st total)

## Continue Glove:

This section is worked over 44 st.

**ROW 45:** k1 tbl, [p2, k2 tbl] 10 times, p2, k1 tbl.

**ROW 46:** k1 tbl, p2, [2-st RC, p2] 10 times, p2, 2-st RC last st of row 46 & first st of row 47.

**ROW 47:** [p2, k2 tbl] 10 times, p2, k1 tbl.

**ROW 48:** [2-st LPC, 2-st RPC] to end.

**ROW 49:** p1, [k2 tbl, p2] 10 times, k2 tbl, p1.

**ROW 50:** p1, [2-st LC, p2] 10 times, 2-st LC, p1.

**ROW 51:** p1, [k2 tbl, p2] 10 times, k2 tbl, p1.

**ROW 52:** [2-st RPC, 2-st LPC] to end.

**ROW 53:** k1 tbl, [p2, k2 tbl] 10 times, p2, k1 tbl.

**ROW 54:** k1 tbl, p2, [2-st RC, p2] 10 times, p2, 2-st RC last st of row 54 & first st of row 55.

**ROW 55:** [p2, k2 tbl] 10 times, p2, k1 tbl.

**ROW 56:** [2-st LPC, 2-st RPC] to end.

**ROW 57:** p1, [k2 tbl, p2] 10 times, k2 tbl, p1.

**ROW 58:** p1, [2-st LC, p2] 10 times, 2-st LC, p1.

**ROW 59:** p1, [k2 tbl, p2] 10 times, k2 tbl, p1.

## Switch to size 4 needles.

**ROW 60:** Bind off using the 2-st Picot bind off method:

*Insert the needle between the first two stitches on the left hand needle, wrap and bring through. Transfer the newly created stitch onto the left hand needle. Repeat between the first st and the newly created st. Bind off the first 4 st in the usual bind off method (Knit two stitches, then insert the left hand needle into the front of the first stitch on*

*the right needle, pull it over the second stitch and off the right hand needle.} This leaves one stitch on the right hand needle. Knit into next st and repeat {}.* Repeat this around the edge and then weave in loose ends.

## Finish Thumb:

### Switch to size 8 needles.

Place the 10 st on 2 needles to start.

**ROW 1:** start knitting in k1 tbl, p1 pattern to match thumb gusset stitches, pick up 2 st on back of thumb to complete row with a total of 12 st.

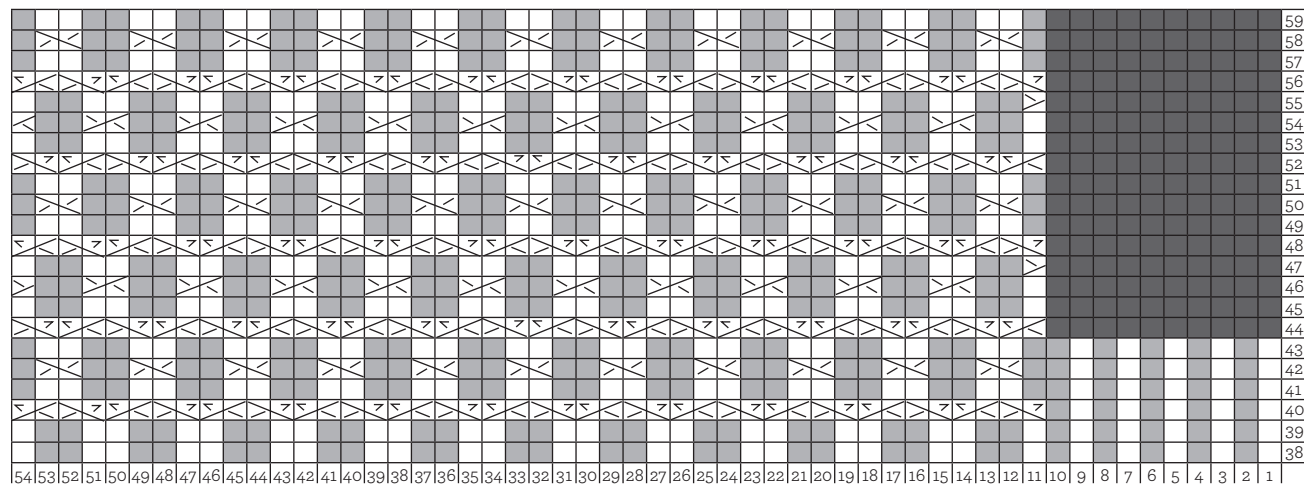
**ROWS 2-5:** [k1 tbl, p1] to end.

### Switch to size 4 needles.

**ROW 6:** bind off in 2-st Picot bind off method.

Complete second glove same as the first, the pattern is same on palm and top of glove.

## PATTERN CHART (ROWS 38-59)



□ knit    ■ purl    ■ no st    ▢ 2-st LPC    ▢ 2-st RPC    ▢ 2-st LC    ▢ 2-st RC